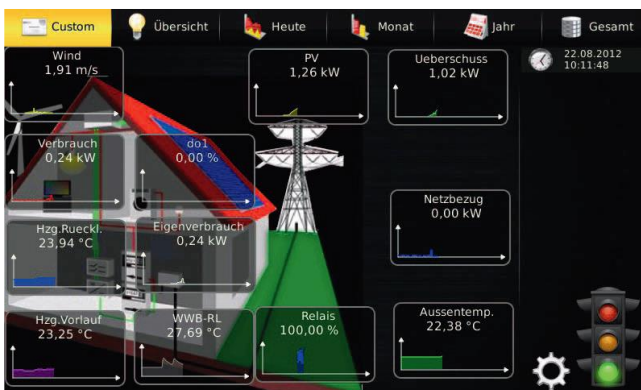


Custom View

The function Custom View gives you the possibility to create individual views with the Powerdog®.

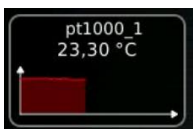
With parameters that are available in the systems or with unloadable background images you can individually design up to 4 pages of the Powerdog®.

You can either draw your own background image with a drawing program, or upload a photo of your house via USB.



The widgets with the parameters (data) show the instantaneous-values and the course of the current day in a small chart.

Regular



Thermostat



Battery

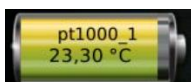
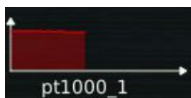


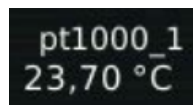
Chart Only



Lamp

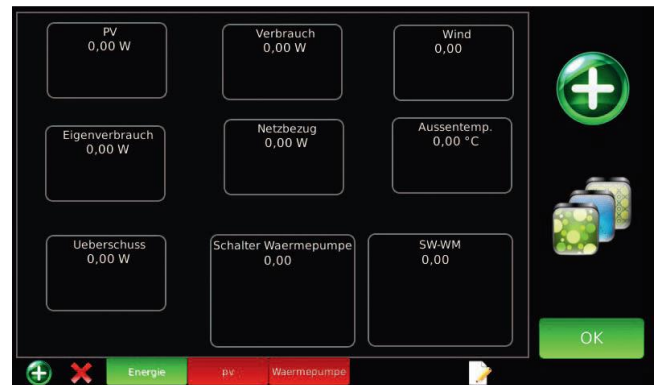


Text Only



You can display various parameters that are available in the control, like inverters, counters, sensors and also the switch operations of the control (relay, digital output, analog output – input), in order to e.g. check the functionality of the control.

Insert Widgets



- Go to „Custom View“ in the device configuration. Create a new widget with the green plus.
- At „Sensor/Counter“ select e.g.: Room temperature (temperature_adc).
- At „Icon type“ select e.g.: Thermostat.
- Confirm with „OK“.
- Drag the widget to a desired place on the display and confirm with „OK“. Afterwards go to the device configuration and press „Save“ to finish the process.